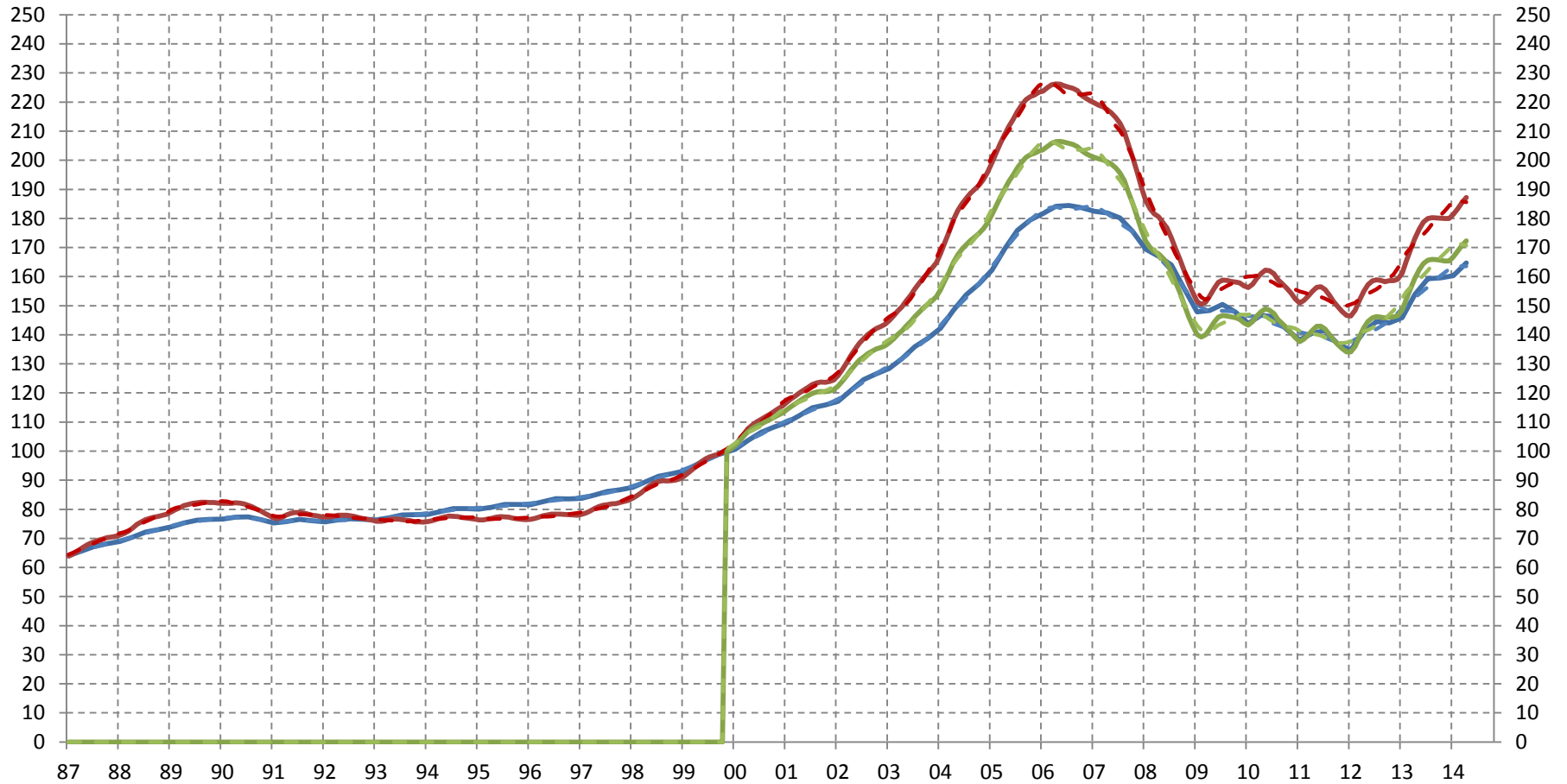


### Case-Shiller National, 10 City and 20 City House Price Indexes



- S&P/Case-Shiller® U.S. National Home Price Index, (Index Jan2000=100, NSA)
- - - S&P/Case-Shiller® U.S. National Home Price Index, (Index Jan2000=100, SA)
- S&P/Case-Shiller® Home Price Index: Single-family - Aggregate index - 10-metro composite, (Index Jan 2000=100 3-mo MA, NSA)
- - - S&P/Case-Shiller® Home Price Index: Single-family - Aggregate index - 10-metro composite, (Index Jan 2000=100 3-mo MA, SA)
- S&P/Case-Shiller® Home Price Index: Single-family - Aggregate index - 20-metro composite, (Index Jan 2000=100 3-mo MA, NSA)
- - - S&P/Case-Shiller® Home Price Index: Single-family - Aggregate index - 20-metro composite, (Index Jan 2000=100 3-mo MA, SA)

